

Resource Monitoring Program



1991 “In-Grade” Design Values first published

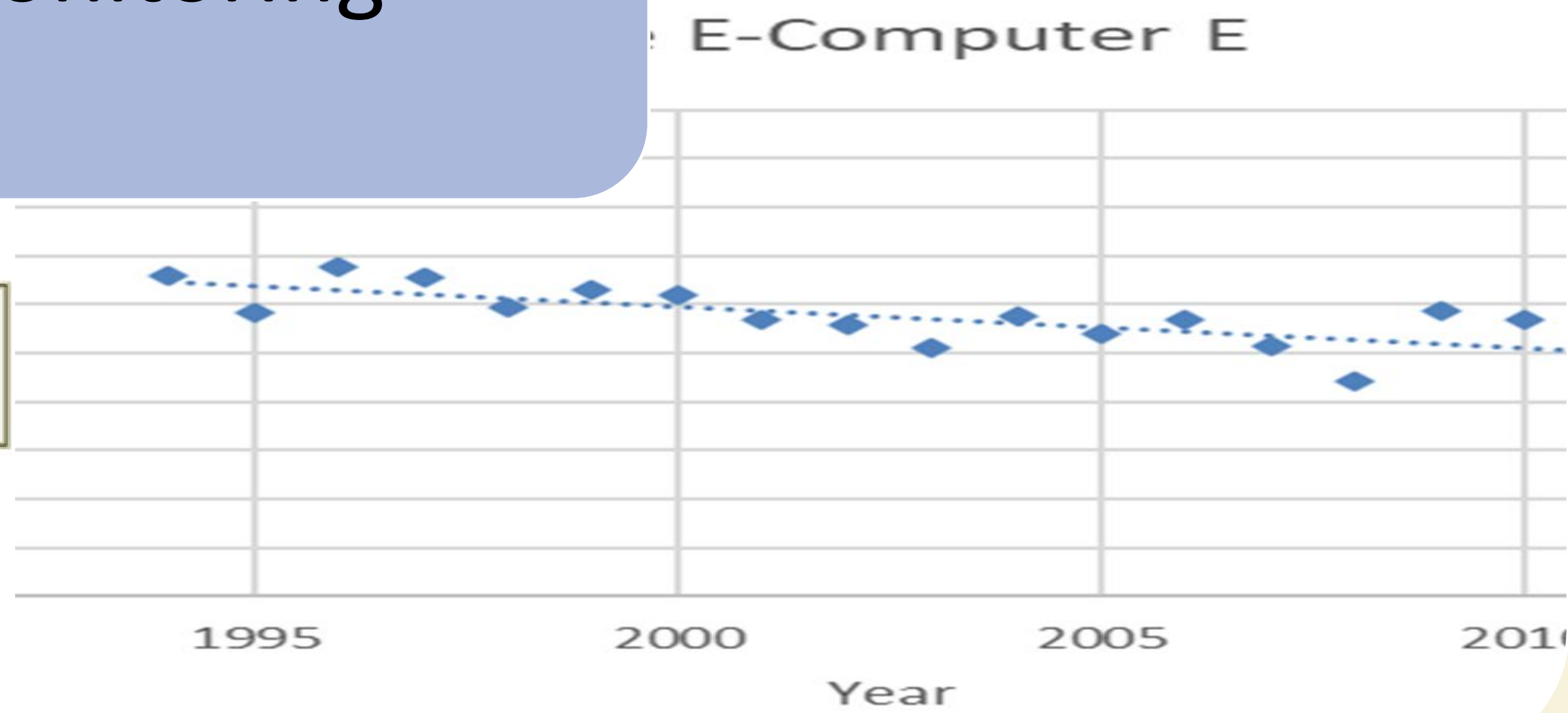
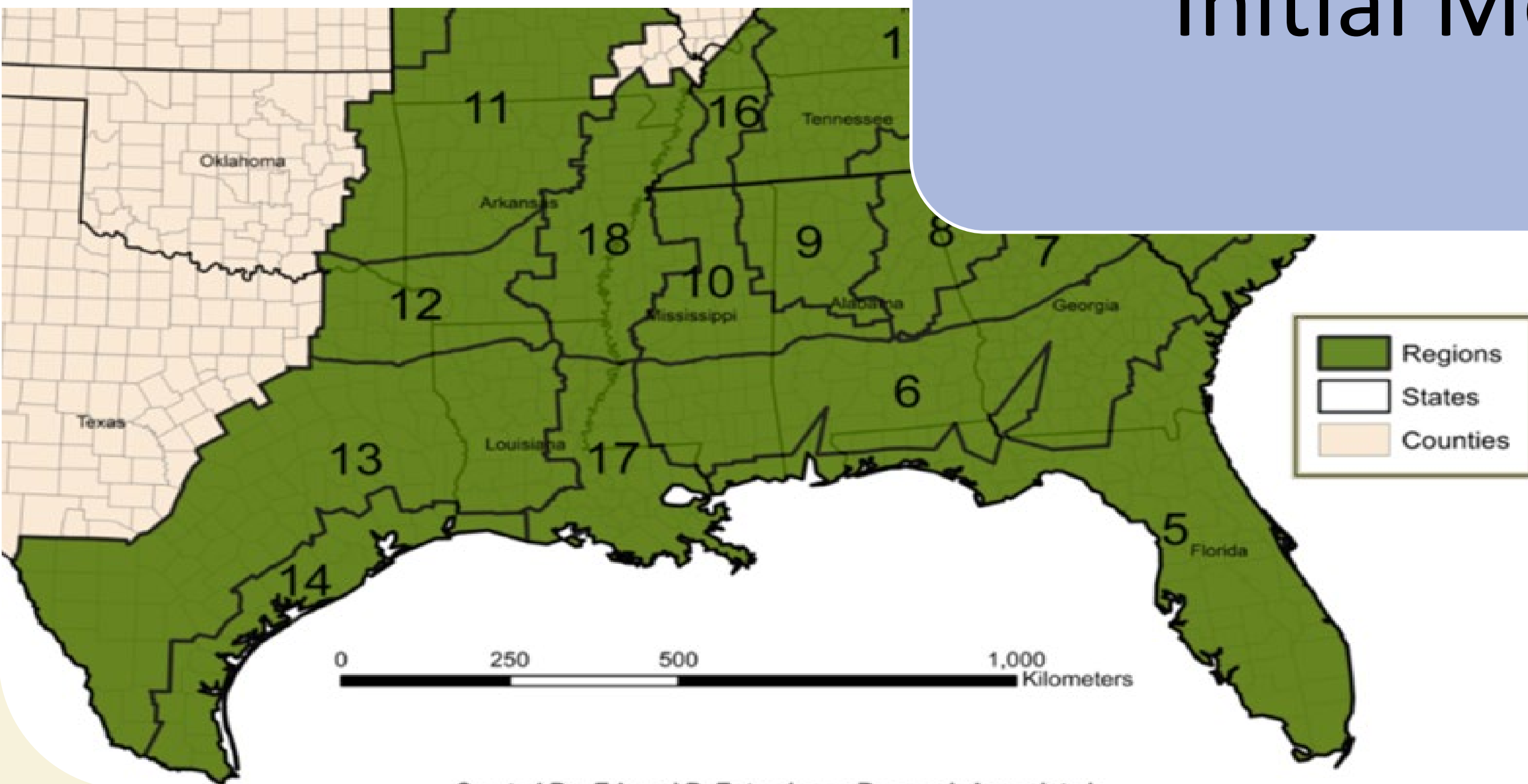


Monitoring of Visually Graded Structural Lumber

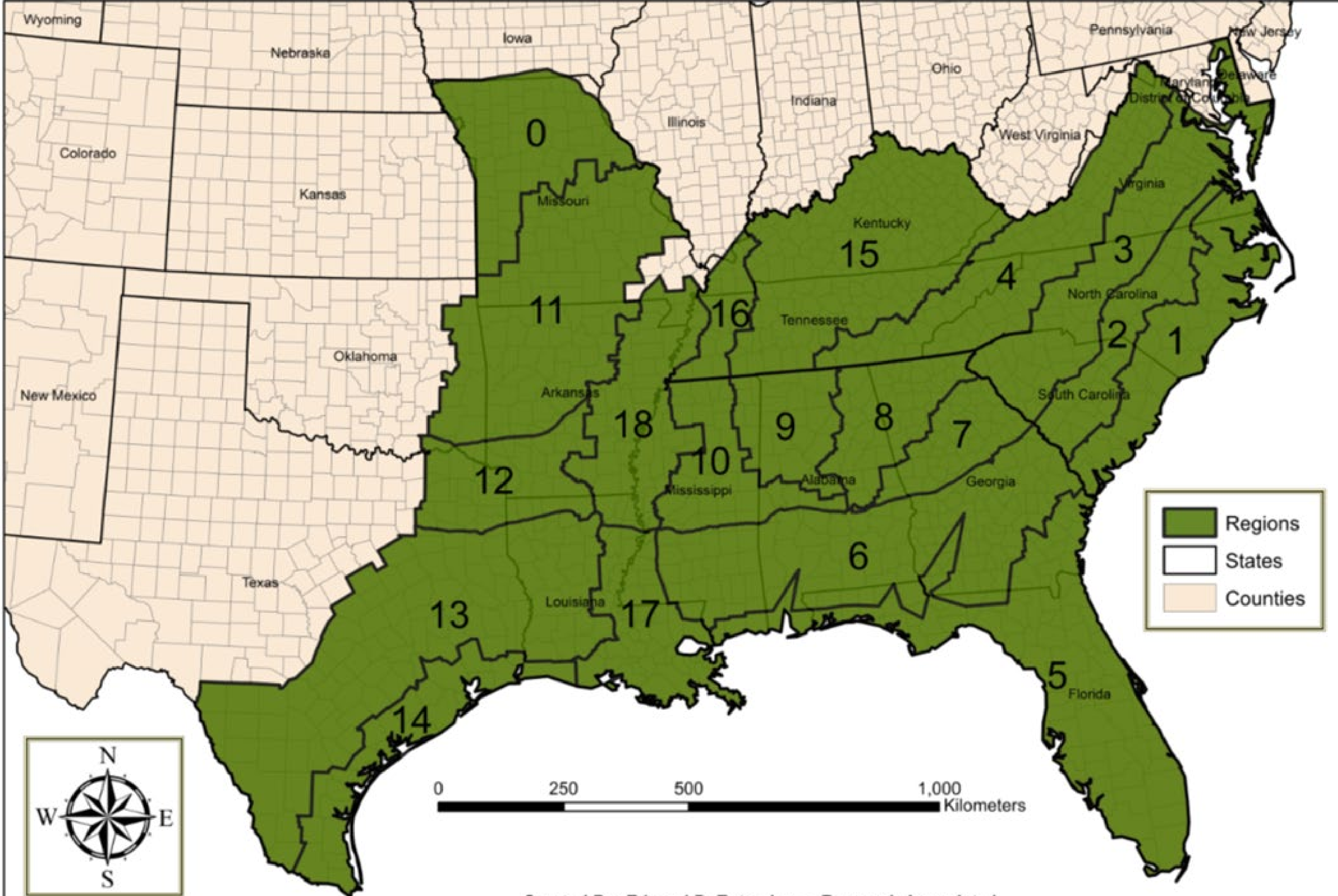
David E. Kretschmann
James W. Evans
Linda Brown



Initial Monitoring



Southern Pine Growth Region Boundaries Map of the Southeastern United States



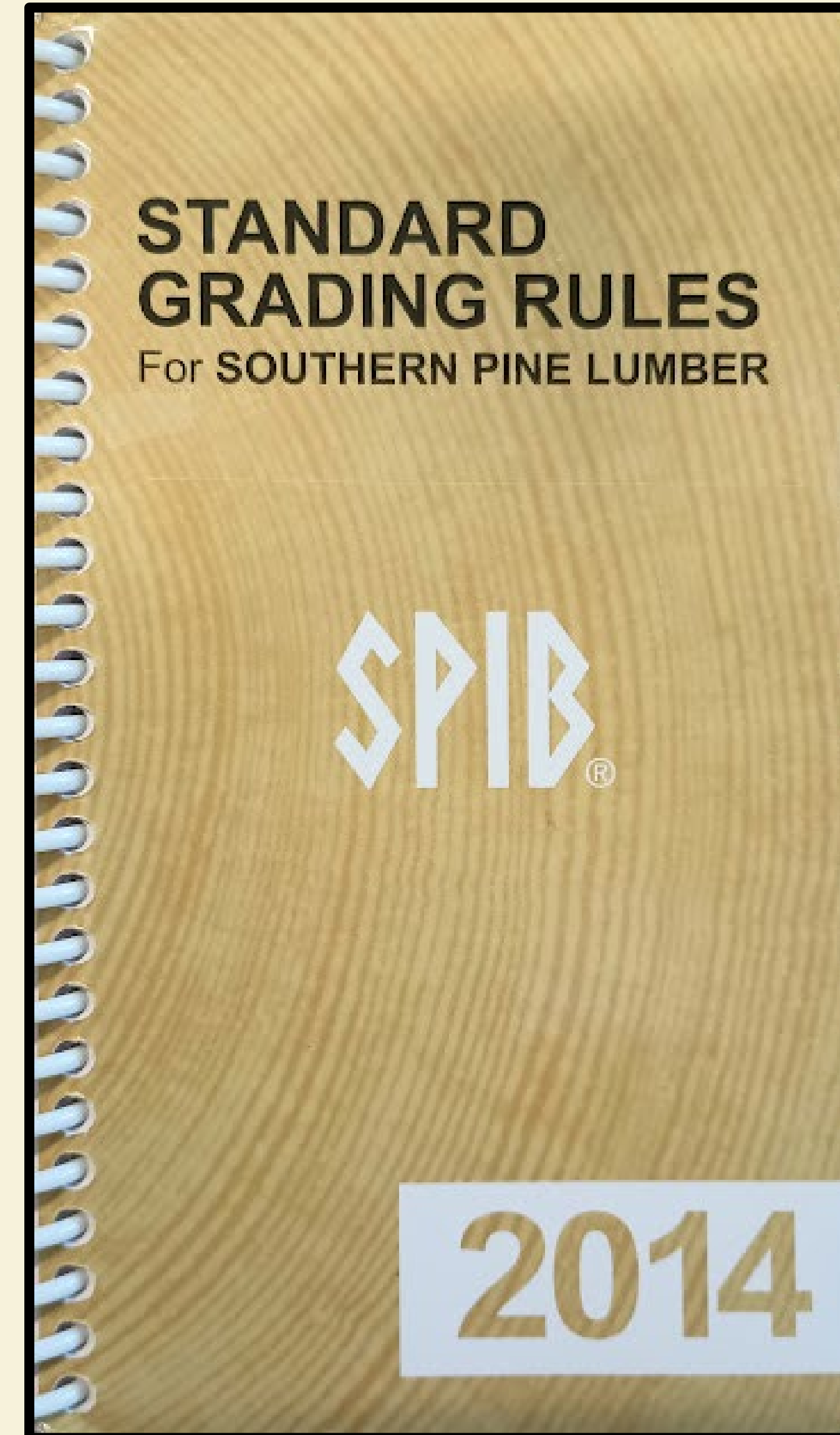
Map Scale: 1:9,911,595

Geographic Coordinate System: North American 1983

Created By: Edward D. Entsminger, Research Associate I
Department of Sustainable Bioproducts at Mississippi State University
Using ArcMap/ArcGIS Version 10.2

Updated on June 3, 2015

2013 New “In-Grade” Design Values published



Since 2013

Destructive Tests for
MOR or UTS

Current
Monitoring

SPIB and TP mills
eligible for sampling

Required by ALSC

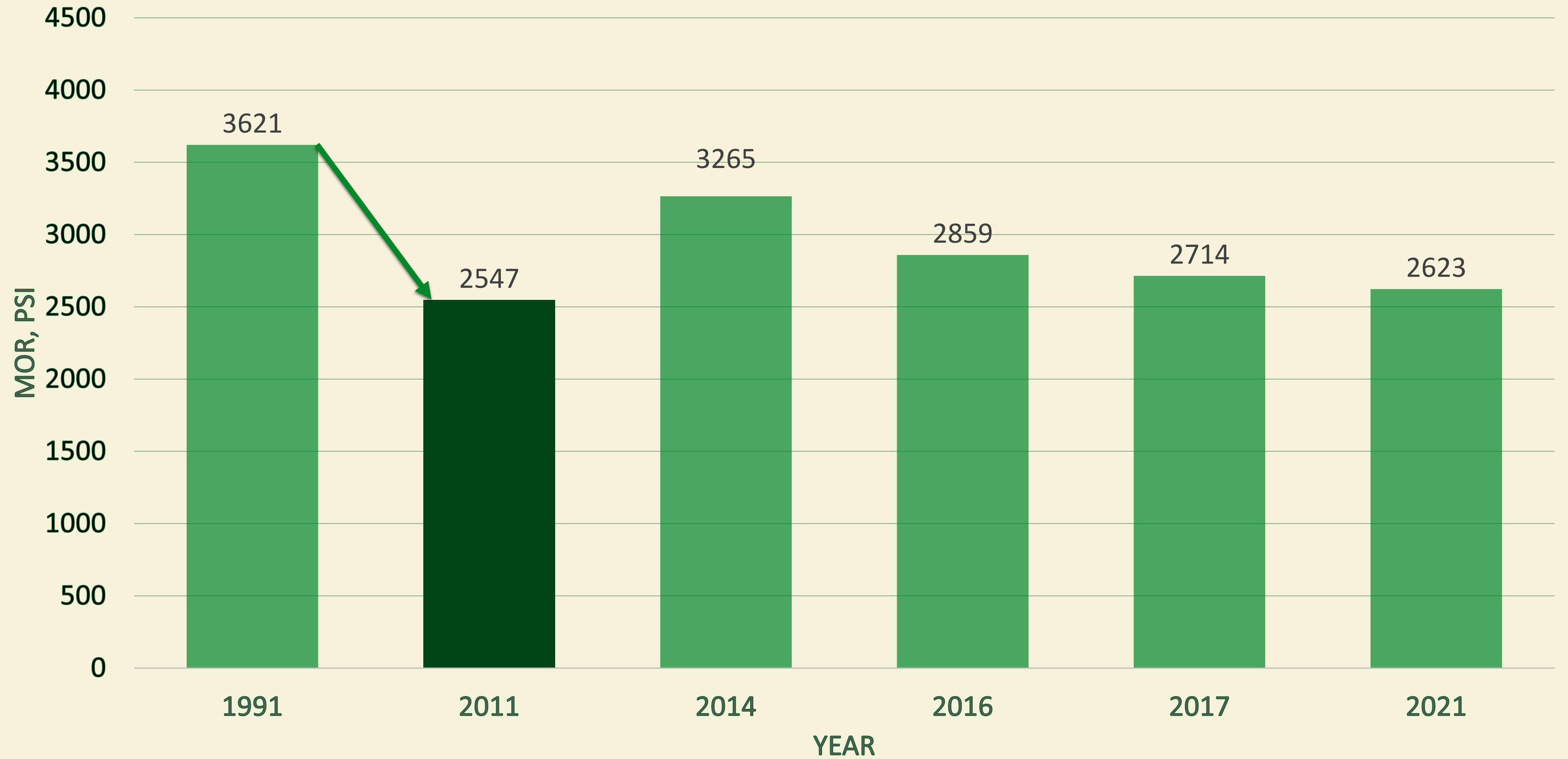
Resource Monitoring Results



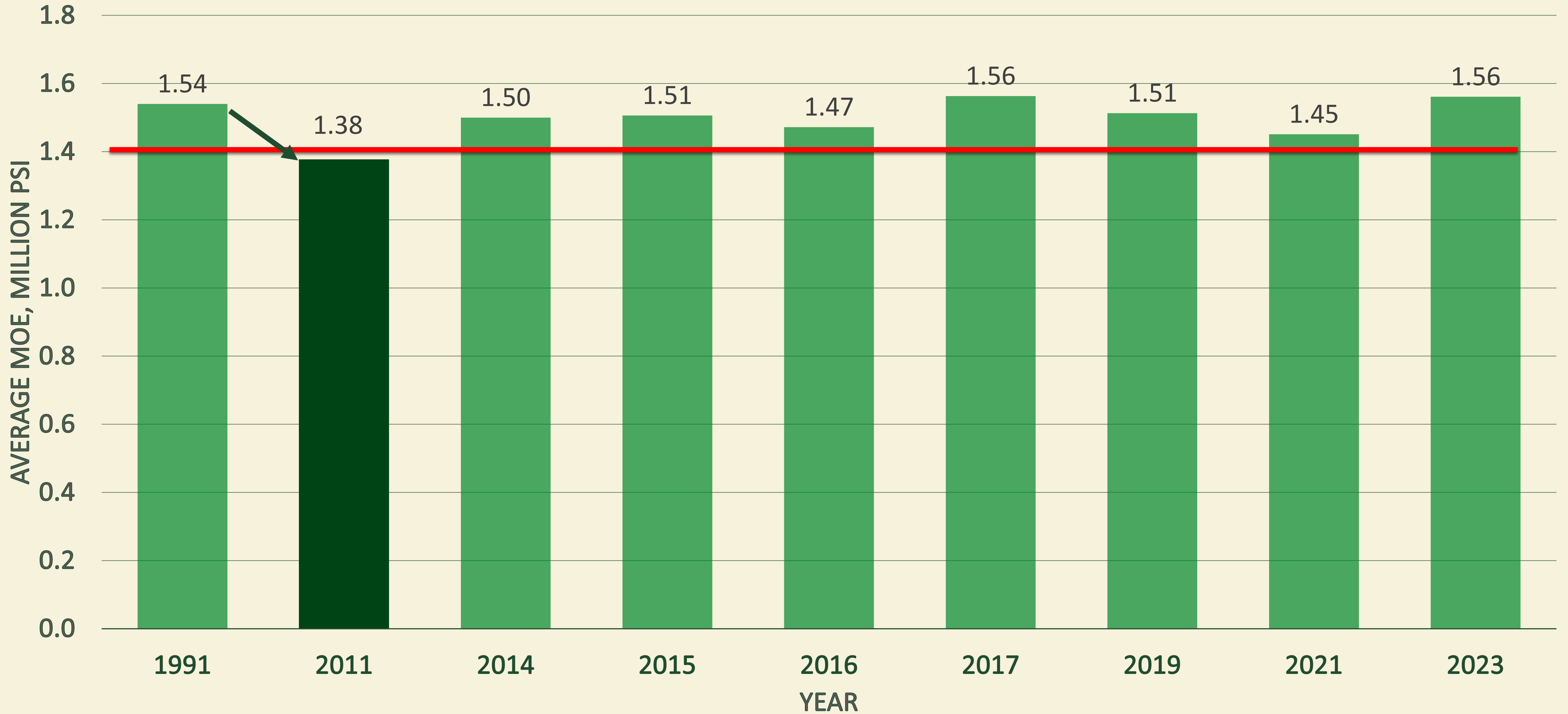
2013-2023



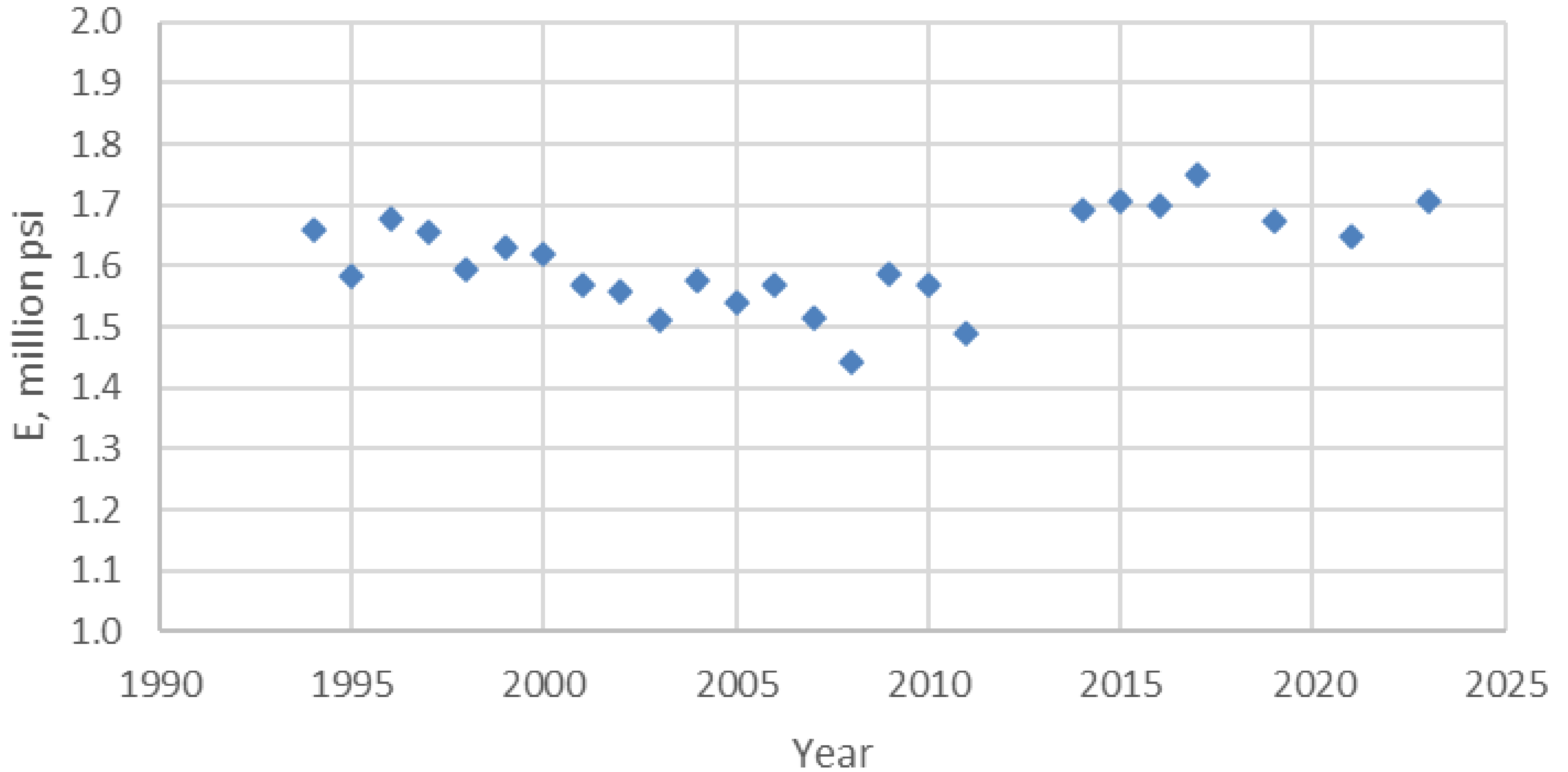
2x4 #2 Bending 5th Percentile TL



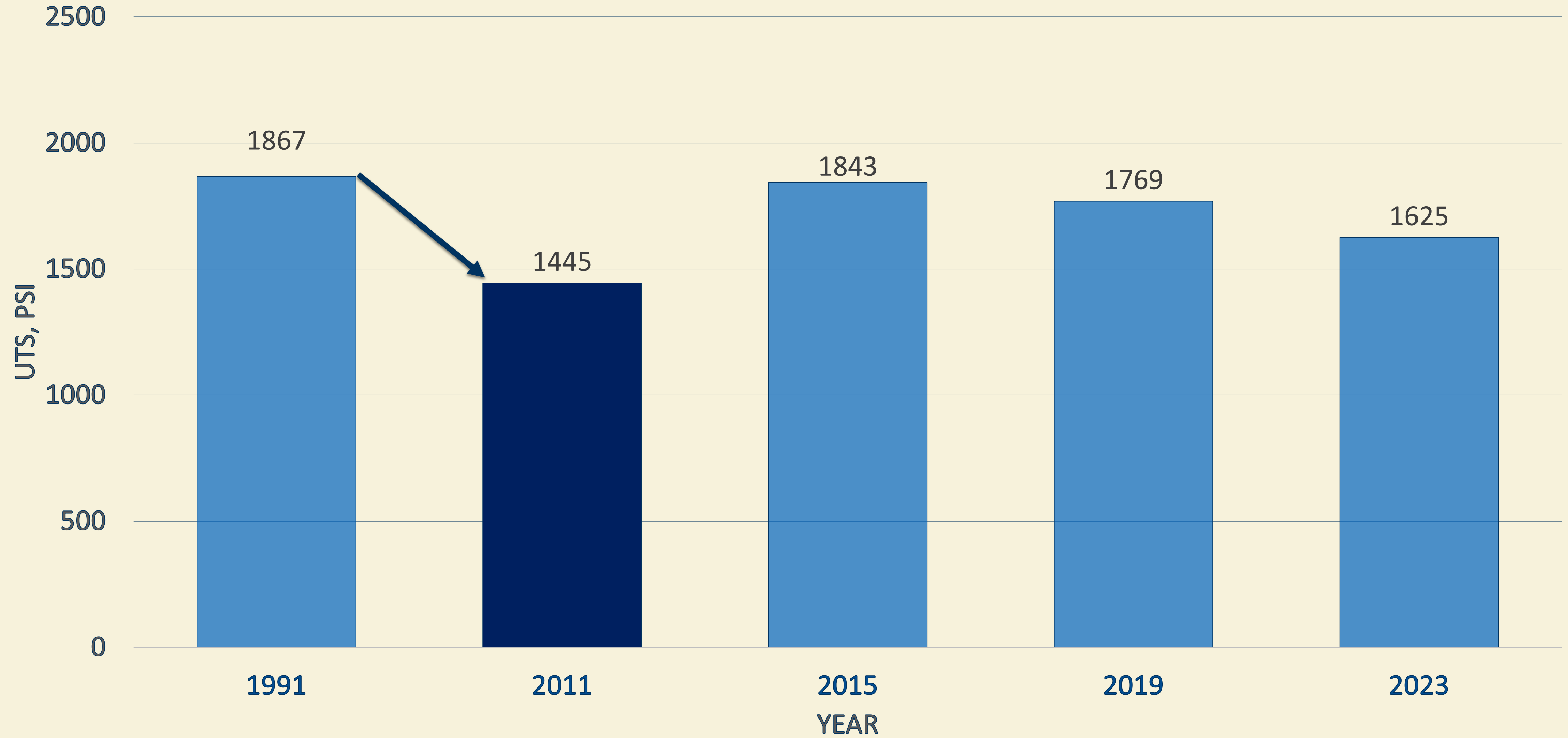
2x4 #2 Average MOE



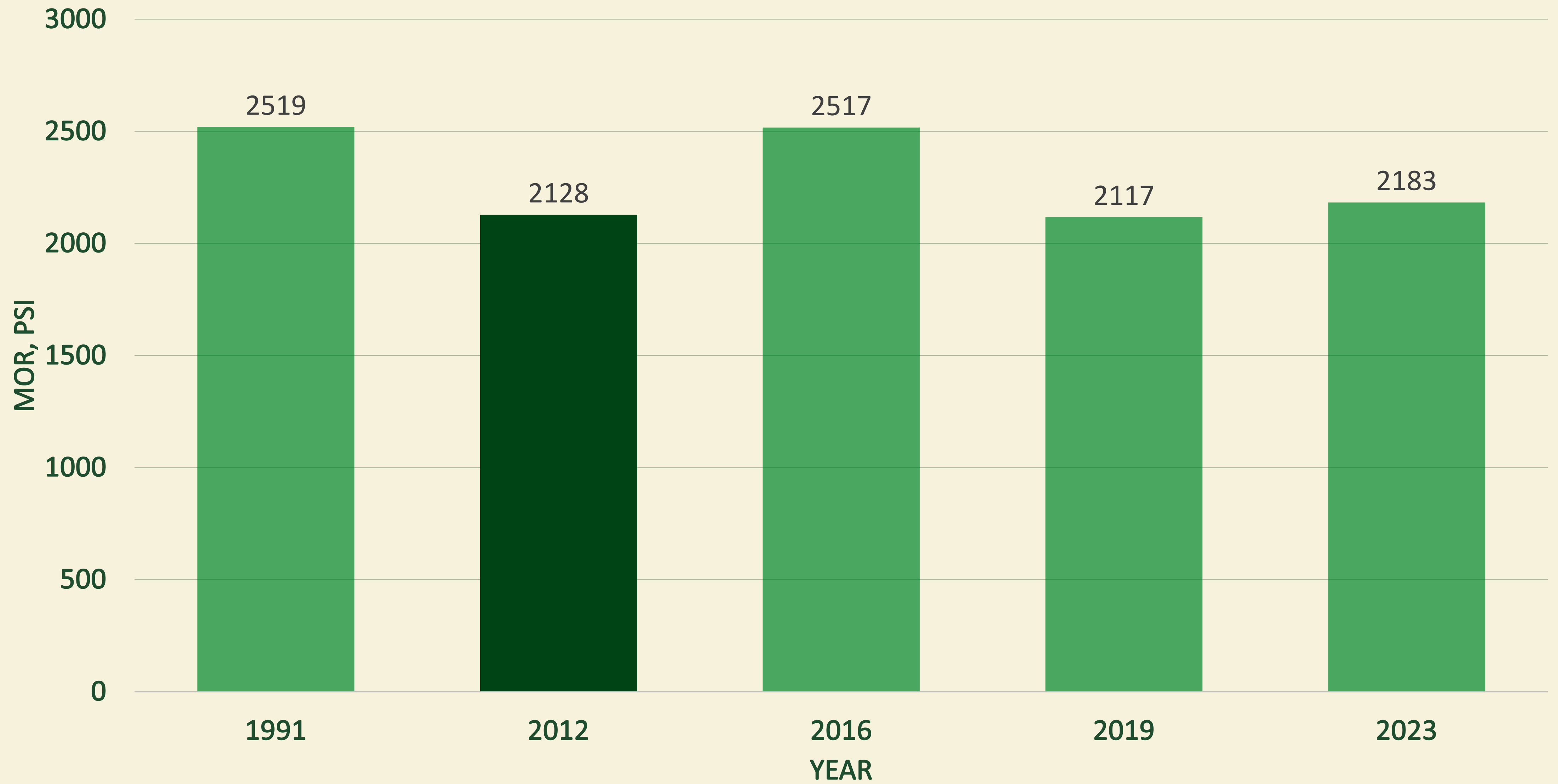
Average E-Computer E



2x4 #2 Tension 5th Percentile TL



2x8 #2 Bending 5th Percentile TL



2x8 #2 Average E

